

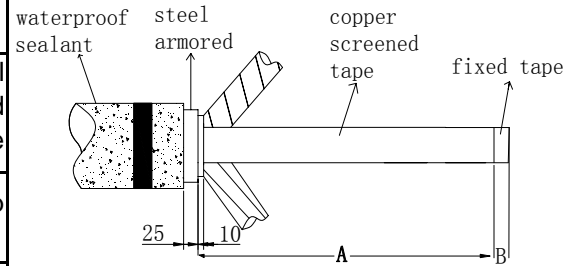
## Installation instructure

### 1.Type of products

Type	External diameter of main insulation	Conductor Cross Section	Dimensions(A)mm	Dimensions(B)mm
ALN(W) 35-□/1	31.9-33.4	50-70	1400	Hole depth of the lug+5
ALN(W) 35-□/2	35.1-39.6	95-185	1400	Hole depth of the lug+5
ALN(W) 35-□/3	41.9-50.3	240-500	1400	Hole depth of the lug+5

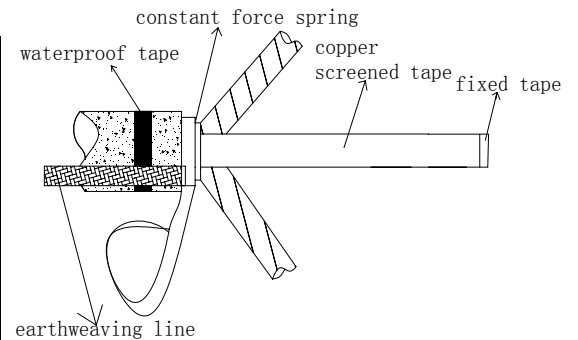
### 2.Pre-processing of the cables

2.1	As picture 1,the stripping size of pre-processing the cables:A+B,keep the cable inner sheath layer 10mm.
2.2	And then strip down 25mm of the sheath,reveal the steel armored,use the abrasive paper to burnish the paint and rust,and clean the surface dirt of long sheath from 50mm down of the stripping.
2.3	Wrapping two layer of waterproof sealant on the sheath from top and down to 25mm
2.4	Wrap PVC tape on the top,and fix the copper tape



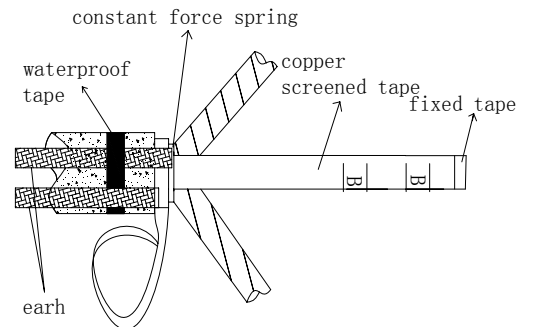
### 3.Install the steel armoured to the earth

3.1	Use the constant force spring to fix the earthing weaving line on the steel armoured
3.2	Use the PVC tape to wrap the steel armoured,constant force spring and inner sheath layer all together.
3.3	Put the earthing wire on the waterproof sealant of the sheath,then wrap waterproof sealant adhesive tape to caught the earthing wire inside to form a waterproof mouth.



### 4.Install copper screened to the earth

4.1	Use the constant force spring to fix the earthing weaving line on the copper screened
4.2	Wrap the filling glue,and wrap one layer PVC tape,do insulation between the two earth weaving line.

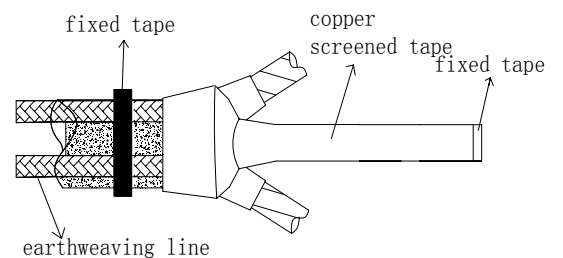


### 5.Trigeminal tube Installation

5.1 Check whether the position of core rope about the trigeminal tube is suitable,to ensure the trigeminal tube to set in the cable root part ,it can remove several laps of the core rope at first.

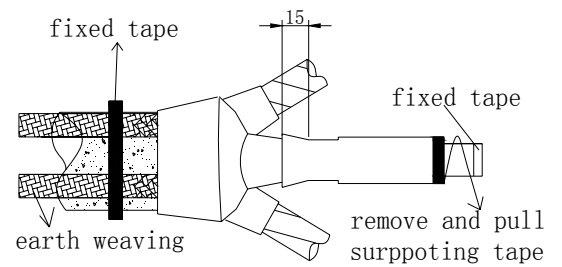
Notes:Don't remove too much laps of core rope to avoid the tube shrink too early .

5.2 Put the cold-shrink trigeminal tube at the cable root part,and remove the core rope by counterclock wise, shrink the neck at first,and then shrink the trigeminal



## 6. Install the cold shrink tube

6.1 Set into the first cold shrink tube and lap joint 15mm with the trigeminal tube, remove the core rope by counterclockwise, and make them shrink, and by the same way to install the second, third shrink tube, and lap joint to the before tube no less than 15mm.



## 7. Stripping the cables

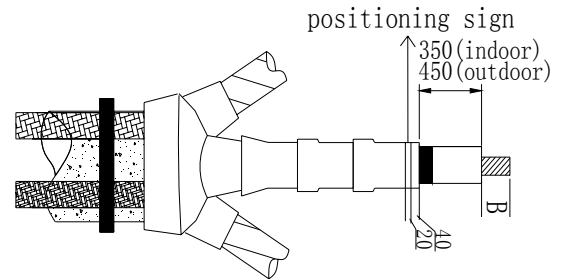
7.1 As the stripping picture, cut the redundant of the cold shrink tube, it can use PVC tape to bind the tube, and then annulus to cut

7.2 Keep 40mm of semi-conductive layer up from the cold shrink tube, other part can be cut down, don't scratch the main insulating of the cable when do the stripping, do chamfering for the semi-conductive and care insulating.

7.3 Note: After stripping the external semi-conductive layer, rub away the trace and semi-conductive particles on the main insulating by using abrasive paper (not include the metal) of max strength about 120, and then polishing smooth of the core insulating.

7.4 At the 20mm down from cold shrink tube, and use the PVC tape to make a obvious mark (here is the shrink standard of the cold shrink termination).

7.5 As the size B to cut the top insulating.

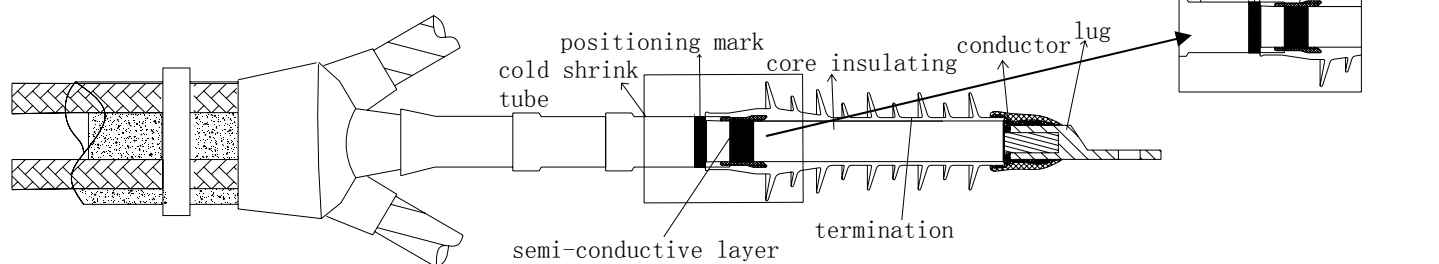


## 8. Install wiring lug

8.1 To check whether the wiring lug is smaller than the inner diameter of the cold shrink insulating tube, otherwise, set into the cold shrink terminal at first, but don't remove the core rope.

8.2 Install the wiring lug, press and connect well.

8.3 Cleaning the wiring lug, and rub away the obtuse angle and burr.



## 9.1 shrink the cold-shrinkable termination ; 9.2 seal processing

9.1 Set into cold-shrink termination, position at the PVC tape marks, and remove the core rope by counterclockwise, and make it shrink well.

Note: After shrink, it can use your hands to click at the top of the termination, it can speed up to retraction.

9.2 Wrap the sealant between the wiring lug and cold shrink termination according to the standard, to finish connect earth to the system

