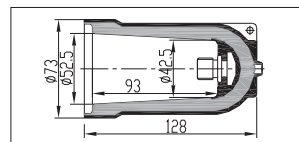


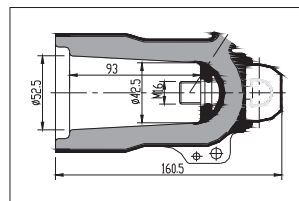
## 630A/250A 绝缘帽 Insulation cap

630A/250A绝缘帽为带电套管，提供绝缘保护，对不带电套管，提供防尘、防潮保护。可安装在套管、多联插座上，当多联组合插座留有备用出线时，必须要用绝缘帽将其密封。

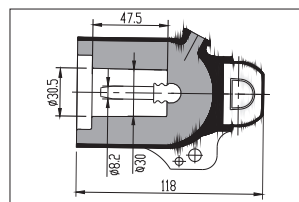
1. 630A/250A Insulation cap provide insulating protection for energized bushing.
2. It also provides dustproof and moistureproof protection for non-energized bushing.
3. Apply to bushing and multi-junction.
4. If there is spare out-terminator of multi-junction, insulation cap must be sealed.



Type: AJM-15 /630 (绝缘帽630A Insulation cap)



Type: AJM-12-24 /630 (绝缘帽630A Insulation cap)



Type: AJM-15(24)/250 (绝缘帽250A Insulation cap)