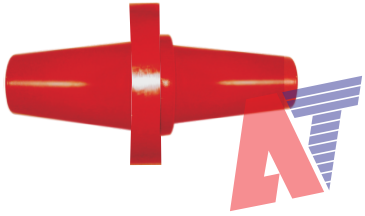


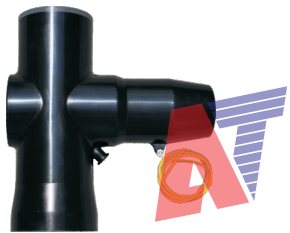
# Cable Systems · Medium-Voltage

## 35kV | 顶部母线系统 Top bus-bar system



Type: AMXT-35  
(35kV母线套管Bus-bar bushing)

AMX-35母线系统可用于35kV GIS系统开关柜之间的母线连接。适合最小中心距为500mm，适合最大电流1250A、2000A。上述母线系统采用螺栓压接结构，柔性连接对于拼接柜体高度误差不敏感。

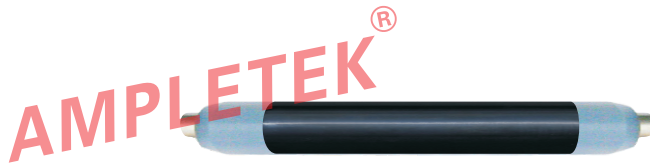


Type: AMXD-35-□  
(丁字接头 Bus-bar connector)

1. AMX-35 bus-bar is suitable for the bus-bar connection between 35kV GIS system switchgears.
2. The applied shortest centre distance is 500mm.
3. The maximum current capacity is 1250A or 2000A.
4. Adopt bolted connecting structure, for flexible connection is not very well at high error of the combined cabinet.



Type: AMXS-35-□  
(十字接头 Crossing connector)



Type: AMX-35  
(母线Bus-bar)

